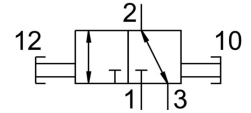
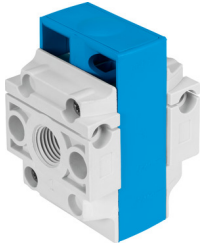


# Shut off valve HE-1/4-DB-MINI

Part number: 3563687

FESTO



## Data sheet

Feature	Value
Series	DB
Size	Mini
Width dimension	44 mm
Type code	HE
Structural design	Shut off valve
Actuation type	Manual
Sealing principle	Soft
Exhaust air function	Without flow control option
Actuator lock	Padlock (optional)
Manual override	None
Type of control	Direct
Symbol	00995347
Valve function	3/2, bistable
Operating pressure	0 MPa ... 1 MPa
Operating pressure	0 bar ... 10 bar
C value	6.3 l/sbar
b-value	0.8
Standard nominal flow rate	2300 l/min
Standard nominal flow rate 2-3	700 l/min
Operating medium	Compressed air as per ISO 8573-1:2010 [7:4:4] Inert gas
Information on operating and pilot media	Operation with oil lubrication not possible
Corrosion resistance class (CRC)	1 - Low corrosion stress
Note on materials	RoHS-compliant
Temperature of medium	-5 °C ... 50 °C
Ambient temperature	-5 °C ... 50 °C
Type of mounting	Line installation With through-hole
Product weight	66 g
Pneumatic connection 1	G1/4
Pneumatic connection 2	G1/4
Air quality class at the output	Compressed air as per ISO 8573-1:2010 [7:4:4] Inert gas
Piston slide material	POM
Seals material	FPM
Housing material	PA-reinforced